



We make  
sustainable  
food production  
possible

# Rotary Systems

## PR2250 External Rotary Parlour

*Steve Shea*

Solution Manager, North America Market Area













12/07/2017

Security Level

## PR2250 External Rotary

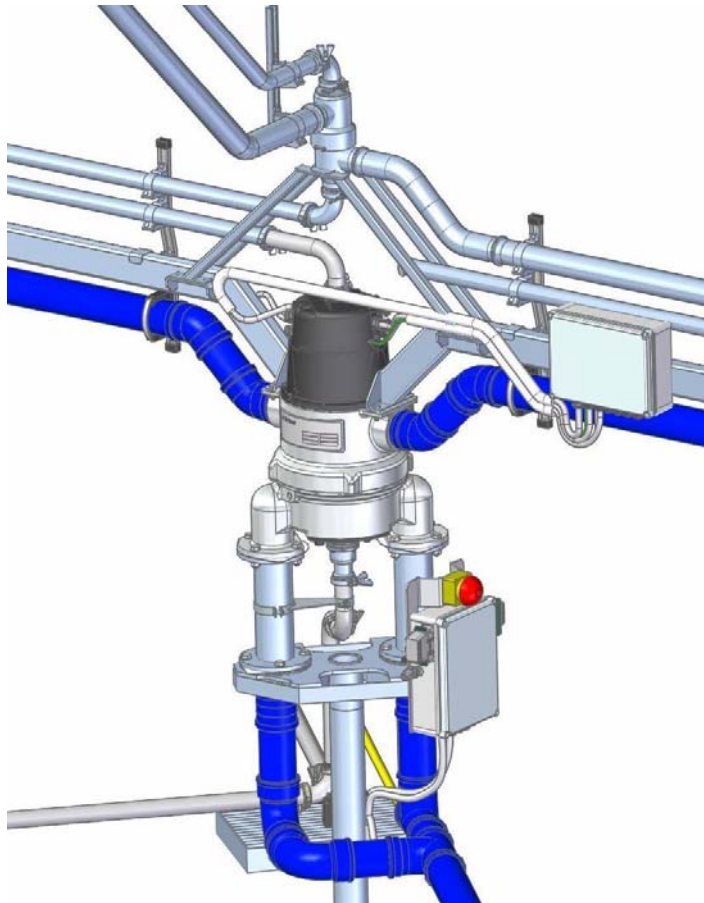
Why is it no longer called PR2100 ?

- New MVEDA Swivel
- New bail divider
- Small update to cabinet bail
- Product New 160023





## MVEDA Swivel & Auxiliary Swivel



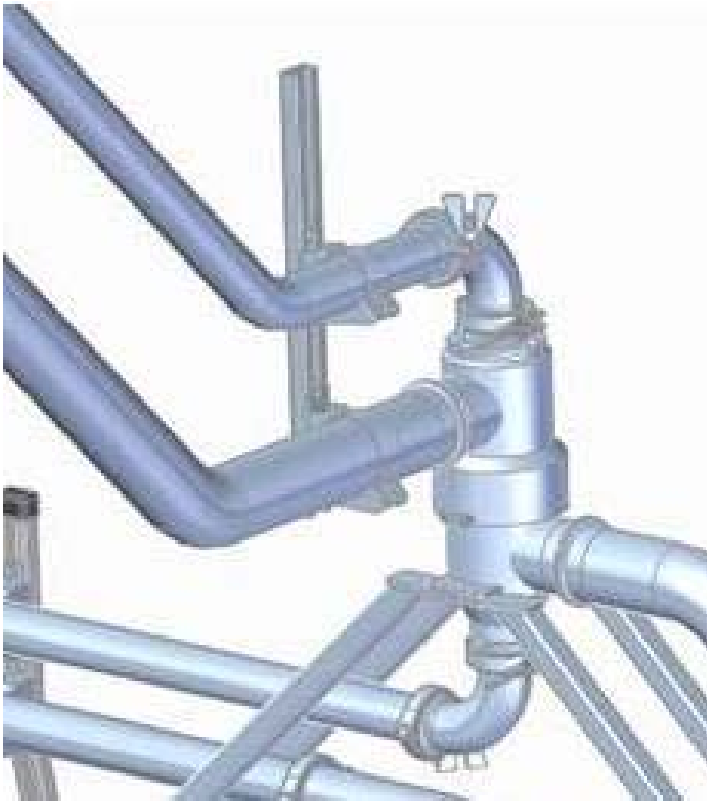
## MVEDA Swivel - Specification



- **Milk**
  - 51mm stainless steel
- **Vacuum**
  - 4 x 110mm ports
  - 8,000 L/min flow rate
- **Electrical**
  - 24 x 20A, 480V tracks
- **Data**
  - 12 x 5A tracks
- **Air**
  - 20mm BSP connection
  - 800 kPa
  - 4,000 L/min



## Auxiliary Swivel 2 Channel - Specification



- 1 x 76mm channel
- 1 x 51mm channel
- Can be used for:
  - Wash water
  - Dump milk
  - Cleaning water
  - Back flush

## Deck Sizes - Milking Points



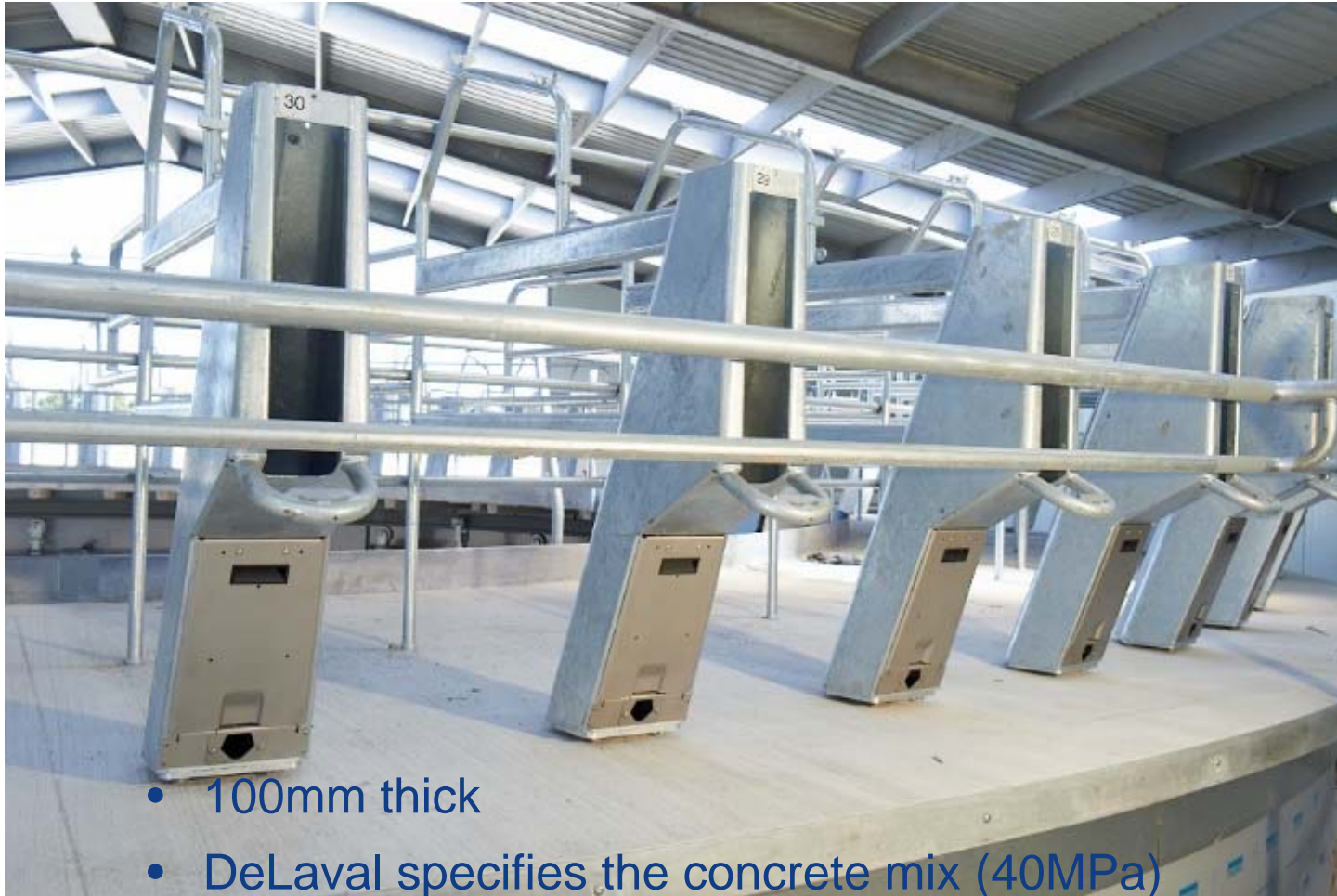


## PR2250 External Rotary Concrete deck

- Concrete deck available in 50 – 80
- Rib Forms and Shuttering must be purchased for Concrete deck installation
- The true concrete deck
- No steel members in or below deck structure
- Concrete ribs
- Eliminates steel rib rusting



## Concrete Deck





## Concrete Deck



- Very strong design
- No steel substructure
- Minimises corrosion

## Why Buy a Concrete Deck?

- Quiet milking
- Cow flow / traffic
- Price





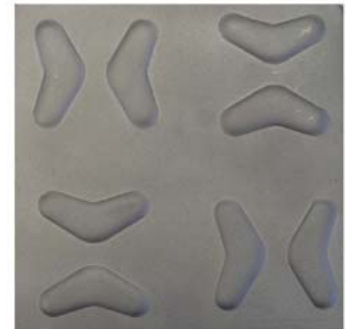
## PR2250 External Rotary SuperDek

- SuperDek material is unique to DeLaval
- 4.5mm thick 3CR12 high chromium alloy steel
- Has stainless steel appearance and qualities
- Comes standard with interlocking rubber mats

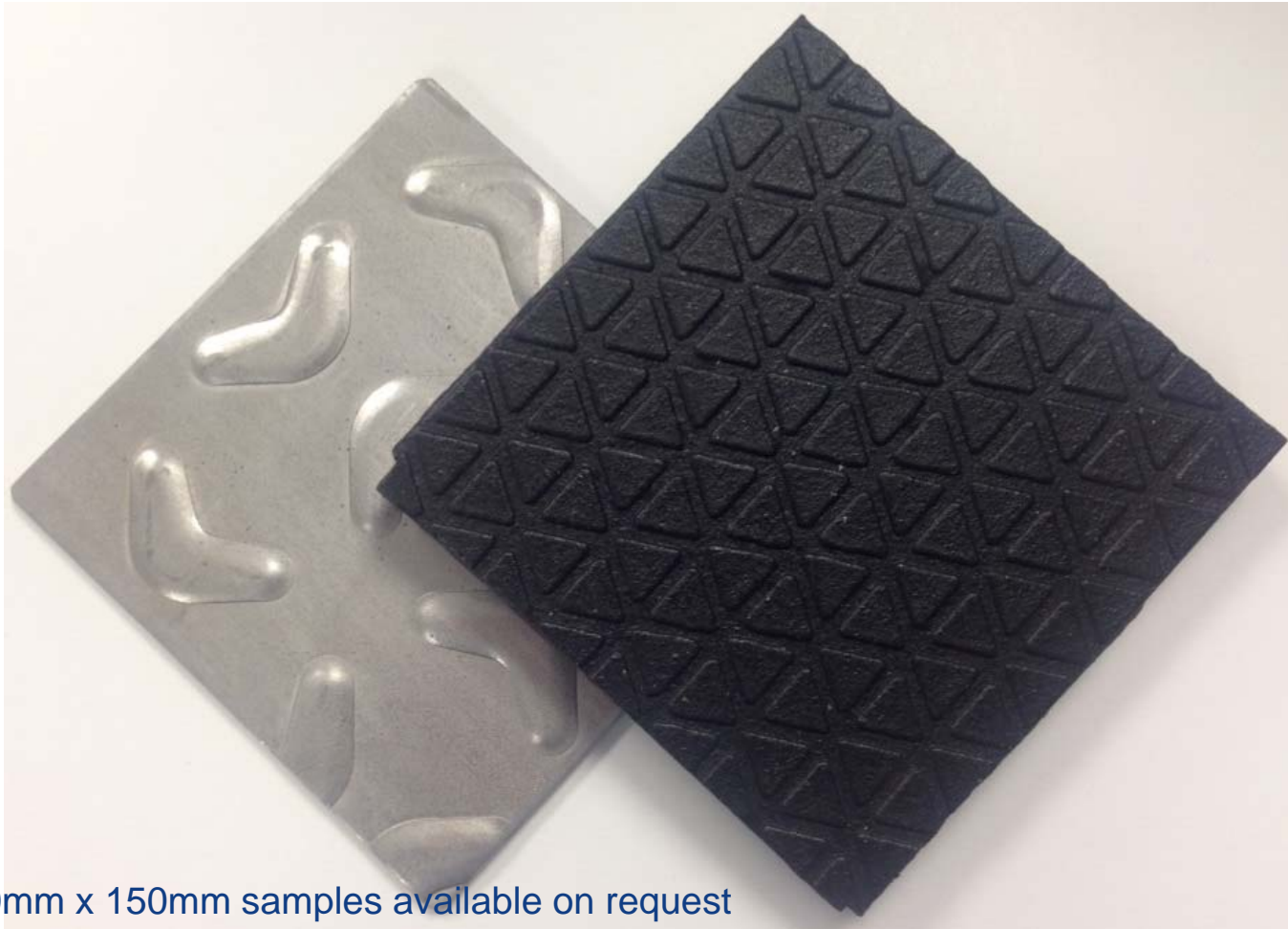


## PR2250 External Rotary SuperDek

- Corrosion resistant
- Does not require any surface coating or protection
- Light weight – which reduces load on rollers, track and drive unit
- Virtually maintenance free



## Sales Samples



150mm x 150mm samples available on request



## Platform Duty

- A SuperDek platform is approximately 500Kgs per milking point lighter than a concrete platform
- That is **30 tonnes** on a 60 bail PR2250

## Platform Duty



## Platform Duty



**22 tonnes**



## Platform Duty

- Because SuperDek it is so much lighter, the service duty is less
- A concrete platform milking 1,000 cows 3 x per day will complete 10,950,000 cow milkings before roller & wear strip replacement
- A SuperDek platform milking 1,000 cows 3 x per day will complete 16,425,000 cow milkings before roller & wear strip replacement

## Sub Structure

- Easy construction
- Traditional welding methods
- Galvanized steel



## PR2250 External Rotary Cabinet Bail

- Low profile design improves cow traffic coming on and off the platform as cows can look over top
- Low milk tube connection for excellent cluster alignment
- Galvanized Steel or Stainless Steel bail
- All stalling is hot dipped galvanized





## PR2250 External Rotary Cabinet Bail

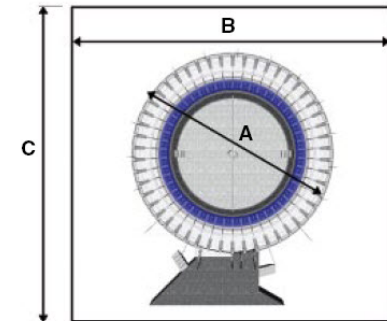
- Well integrated with MP580 automation
- All wiring, hoses, and vacuum operated ACR cylinder fit inside cabinet bail
- Bail width = 180mm
- Cow stall width = 730mm
- MPC150 detacher is also an option





## PR2250 External Rotary Building Sizes

- Stall width is 730mm for Holstein cows
- Narrow 180mm bail width having MP580 keypad



	A		B		C	
Number of stalls	Platform diameter (m)		Building width (m)		Building length (m)	
	680 stall width	730 stall width	680 stall width	730 stall width	680 stall width	730 stall width
30	8.6	9.1	10.8	11.3	11.2	11.7
34	9.7	10.2	11.9	12.4	12.3	12.8
40	11.3	12.0	13.5	14.2	13.9	14.6
44	12.4	13.1	14.6	15.3	15.0	15.7
50	14.1	14.9	16.3	17.1	16.7	17.5
54	15.2	16.0	17.4	18.2	17.8	18.6
60	16.8	17.7	19.0	19.9	19.4	20.3
64	17.9	18.9	20.1	21.1	20.5	21.5
70	19.5	20.6	21.7	22.8	22.1	23.2
80	22.3	23.5	24.5	25.7	24.9	26.1
100	27.7	29.3	29.9	31.5	30.3	31.9



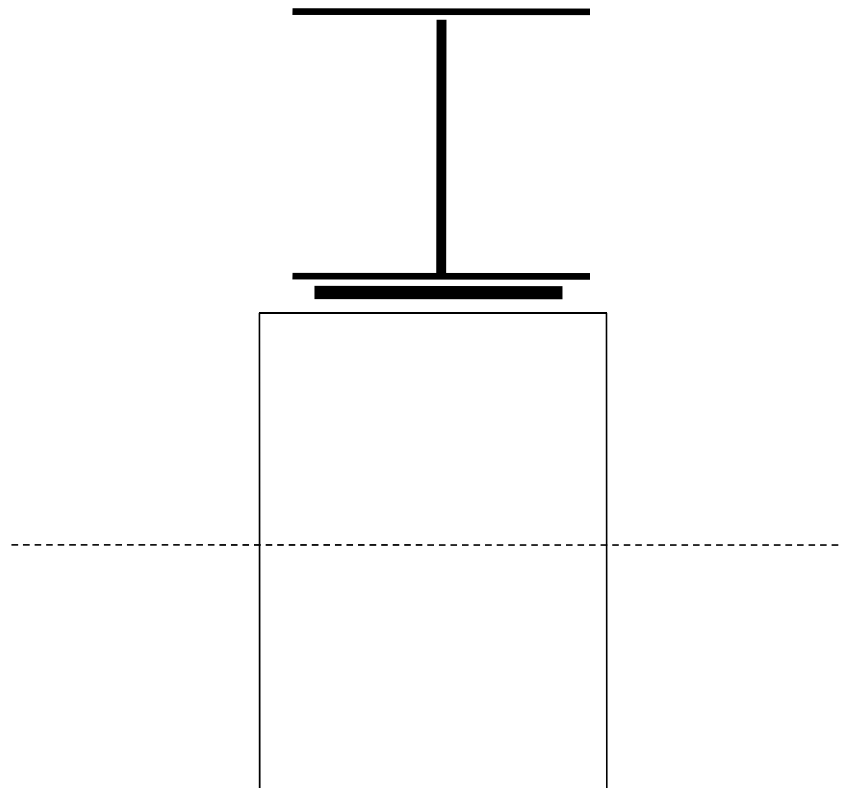
## Main Roller & Pedestal



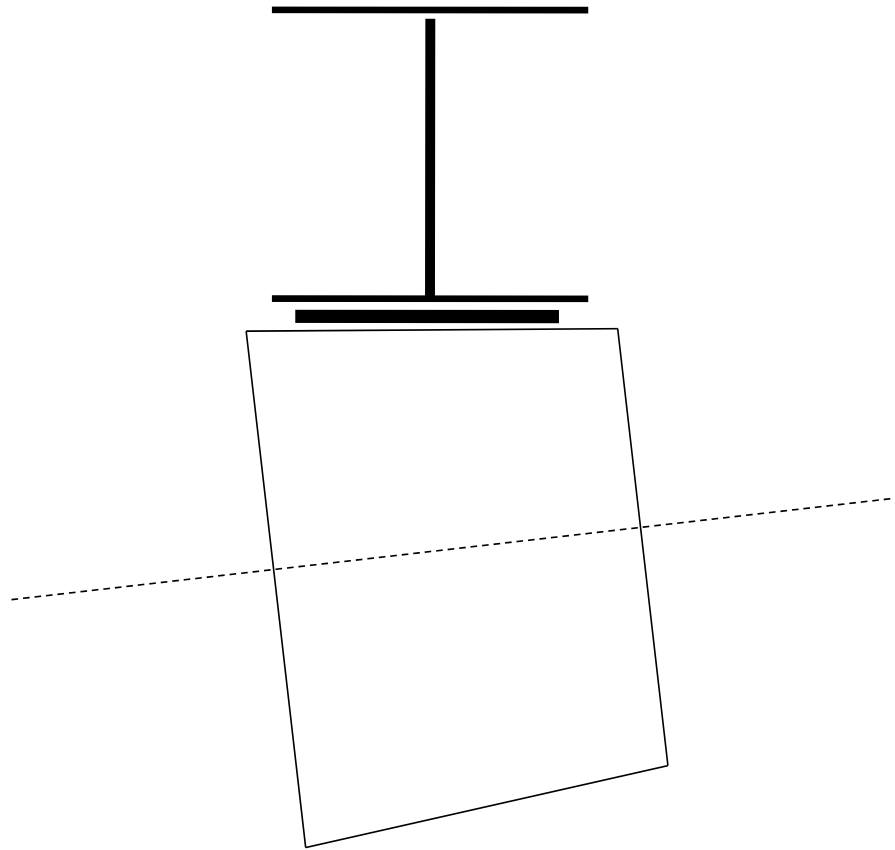
- Tapered steel roller = reduced friction
- Galvanised pedestal
- Rubber damper
- Auto oiler ensures correct lubrication



## Conventional Parallel Roller



## PR2250 Tapered Roller





## 200mm Tapered Roller



## 200mm Tapered Roller



## PR2250 External Rotary Side Location Roller

- Locates the platform with rollers on both the inside and outside of the main track
- Galvanized pedestal
- Adjustable anchor bolts





# Track



Standard Wear Strip (SWS)



## Drive Unit

- 2 x .75Kw motors
- 90deg gear boxes
- Solid rubber drive wheels
- 64, 70 & 80 MP's have 2 units
- Galvanized frame



## PR2250 External Rotary RC70 platform controller

- RC70 is the only controller used on the PR2250
- Not the same as the RC90 with HBR
- Controls rotary deck speed, stop, start, crowd gate forward, cow exit aid



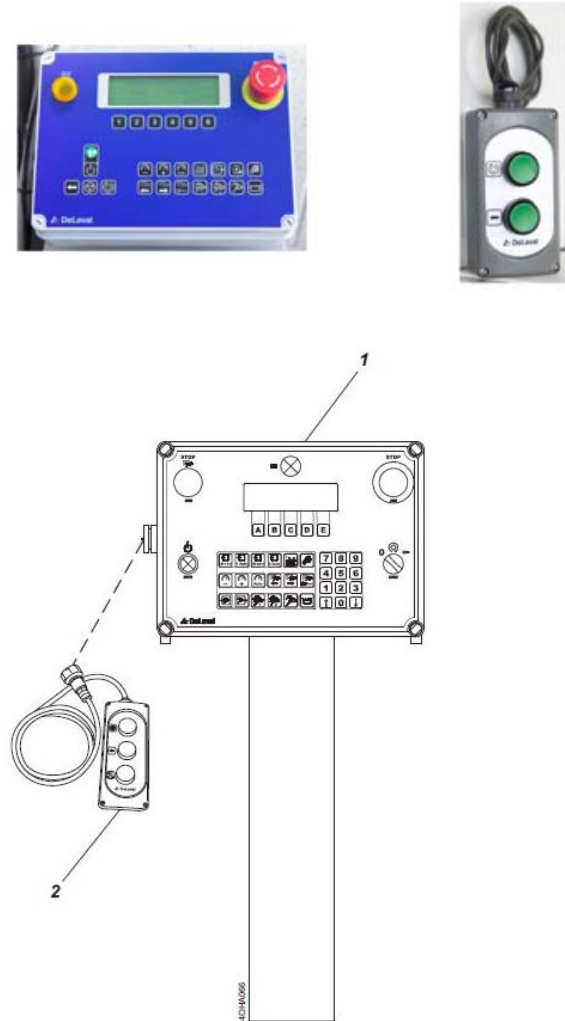
12/07/2017





## PR2250 External Rotary RC70 with emergency standby control

- PR2250 is only available with 3 phase 230volt power → CQT pricing software
- RC70 controller has a direct on-line standby control
- Can run the PR2250 if the VSD controller fails for the platform drive
- Plugs into the side of the RC70 control console
- Same concept as with the HBR



## PR2250 External Rotary

### Standard features

- Outward sloping deck
- Walkway with Inner splash guard



12/07/2017

Security Level



## PR2250 External Rotary Options

- In-parlour feed mangers at every bail





## PR2250 External Rotary Options

- Retention Bar



## PR2250 External Rotary Options

- Service Alignment arm



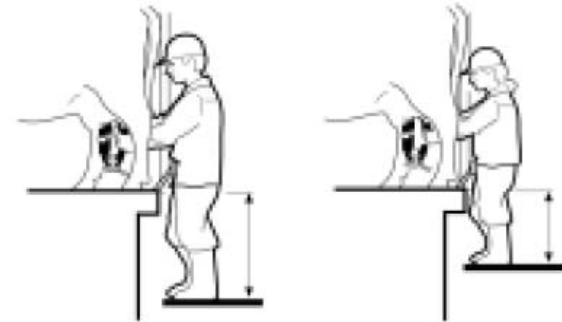
## PR2250 External Rotary Options

- ComFloor adjustable floor
- Cow locators
- Choice of Milker units – Harmony, MC70 barrel claw, MC30HD



12/07/2017

Security Level



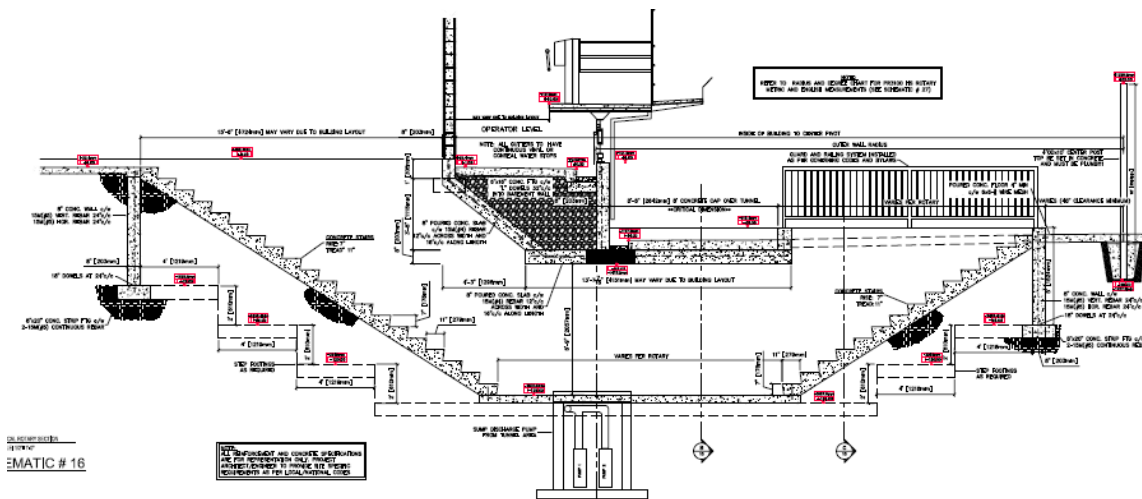
With DeLaval adjustable floor, you can adjust the height to suit whoever is milking.





## PR2250 External Rotary Options

- Center pit access steps
- Tunnel underpass is not required





## PR2250 External Rotary Platform Installation crew cost

- Line item in CQT specification
- PN 94882401
- Is not applicable for discounting
- 3 man crew from New Zealand
- Flights, hotels, on-ground transportation, and meals are extra
- They are welders

	9x. Installation cost
	1. Stall
94882401	PR ROTARY PLATFORM INSTALLATION COST



## PR2250 External Rotary Platform Installation crew cost

- They do NOT install :
- Milk lines, receiver group, swivel, truss
- Meters, pulsation, keypads, electronics
- They are welders



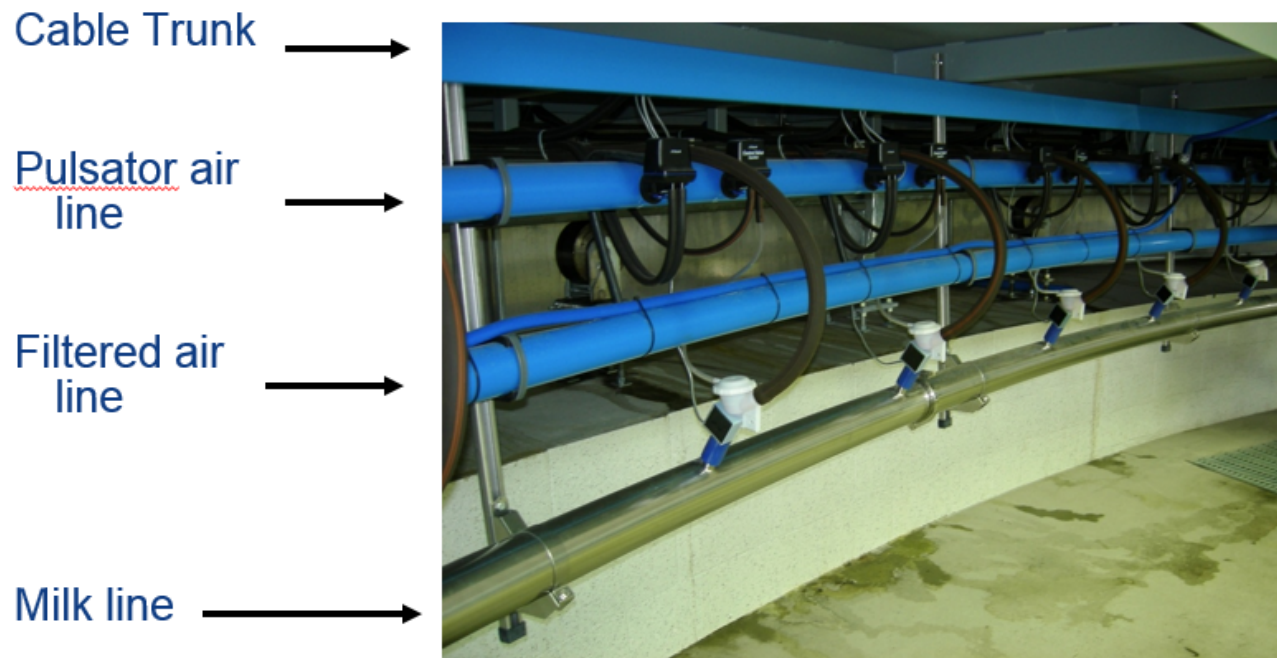
		<b>9x. Installation cost</b>
		<b>1. Stall</b>
94882401		PR ROTARY PLATFORM INSTALLATION COST

## PR2250 External Rotary Milking System Integration

- Milking system is integrated with the platform, making it very easy for installation and maintenance
- No holes to drill, bolt-on system
- Concrete ribs have threaded inserts cast into the concrete
- The milk lines are supported from the C-profiles



## PR2250 External Rotary Radial Lines (pipes)



Everything stays clean and dry



## PR2250 External Rotary Trombone Cleaning System

- Simple and Proven to clean large bore milk lines and receiver



## PR2250 External Rotary Candle washer

- Folds out from the bail
- Easy to use, and Fast



12/07/2017

Security Level



48

## PR2250 External Rotary

### DelPro Automation – 2 options for parlour ID

- MPC580 with mm27bc and IDD touch screen
- ISO eartag ID is on the rotary deck, once the cow cannot back off the platform
- 'B' transponder ID is with IRW portal multireader, with a commitment lane



12/07/2017





## PR2250 External Rotary

DelPro Automation – Eartag ID on the rotary platform



12/07/2017

Security Level





# **DeLaval**

## **IDD (interactive Data display)**

- Touch screen
- Audible alerts
- Real time cow information
- Individual stall control
- Abnormal milking information
- Cow sorting decisions
- Farm monitoring cameras
- Media player

## PR2250 External Rotary DelPro Automation – IDD touch screen

- 17" Compact or 20" Premium
- 20" Premium supports up to 4 remote farm cameras
- 20" Premium supports music player



## DelPro parlour automation

### MM27BC milk meter

- High capacity (14 litres per min) Free-Flow milk meter that uses infrared technology with no moving parts
- Low-cost maintenance protocol – one silicone gasket on mm27bc
- Think of the annual In-Service cost savings on a 50bail rotary !
- Meters are calibrated with Software



## DeLaval MM27BC Milk Meter

### Less Hot Water & Detergent for Cleaning

Free flow design makes it easy to clean, which leads to significantly less hot water and detergent requirements than other meters.

Infrared light technology – highly accurate measurements.

No moving parts and no kits to change annually. This means less rebuild labor & faster calibration



MANAGED BY  
DELPRO  
FARM  
MANAGER



# MM27BC Milk Meter

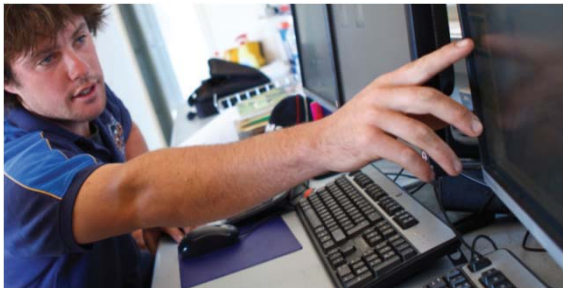
The only milk meter in the market that detects *Blocks, Slips, Kick-Offs, Blood & Conductivity* in one device!

**ICAR / DHIA approved**



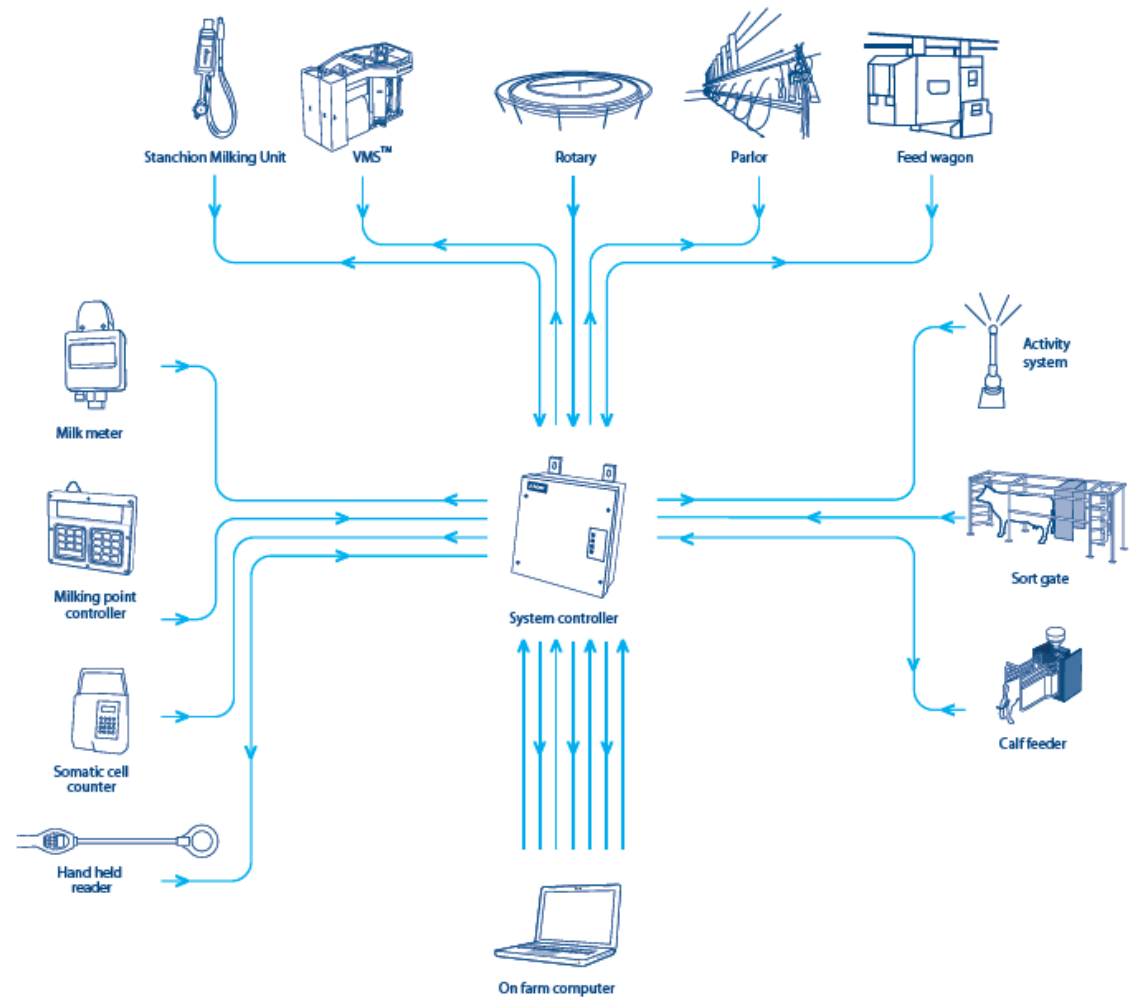
## PR2250 External Rotary DelPro Automation

- DSG10 sort gate
- Computer feed stations
- Activity monitors
- CF1000 calf feeder
- TSR – teat spray robot



12/07/2017

Security Level



## PR2250 External Rotary

### Safety first - skirting

- Protects operators from moving parts
- Protects equipment from Urine, Manure, and Water
- Galvanized Steel (rotating)
- Stainless Steel (fixed)



## PR2250 External Rotary

### Safety first – pressure safety switch

- Mounted at cow entry
- Platform will stop if a cow is trapped
- Operator will need to reverse the platform





## PR2250 External Rotary

### Safety first – Pull cords

- Above operator's head
- **Blue** for Stop / Start
- Only at entry and exit area
- **Red** for Emergency Stop
- Full circle around platform



## PR2250 External Rotary Safety first – Emergency Stop switches

- Connected to **Red** Pull Cords



## PR2250 External Rotary

Safety first – Inside safety switch



## PR2250 External Rotary Customer Values

- From 3 to 12 hours milking per day
- Specified to suit the client's requirements
- From auto detacher to full DelPro herd management automation

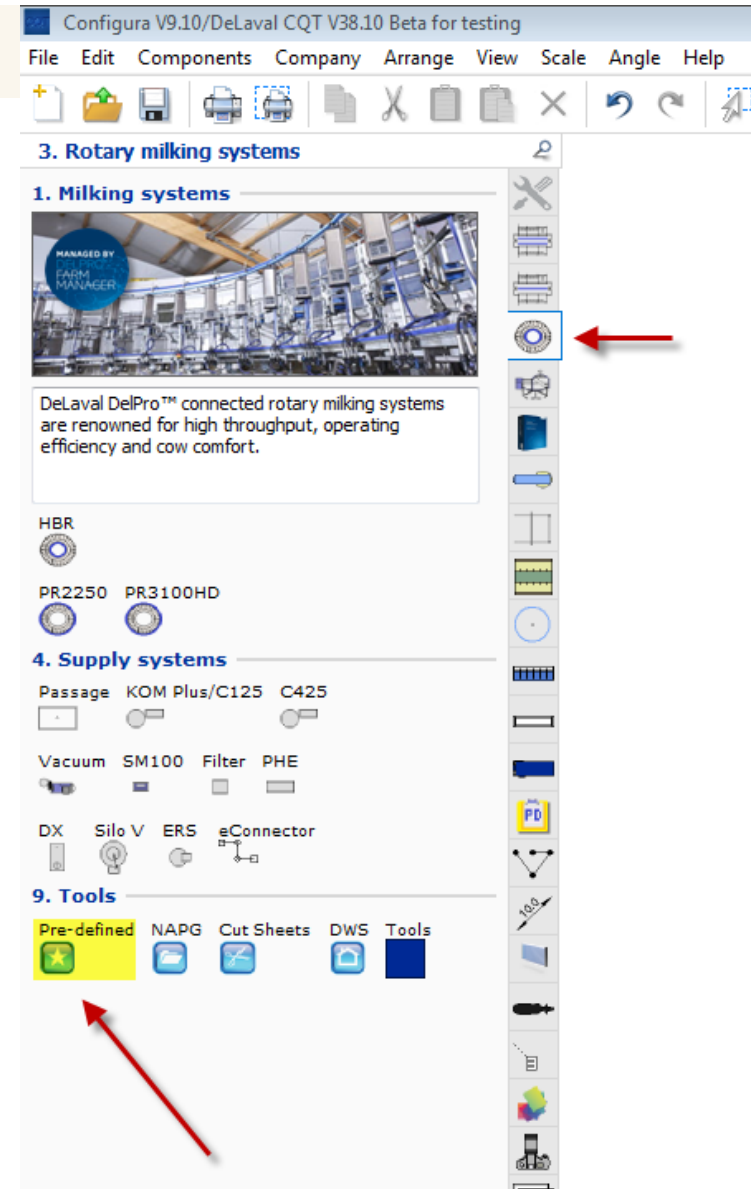




# PR2250 External Rotary CQT pricing software



- Use the Pre-defined button found in the Rotary systems TAB
- Click, Drag and Drop !





We make  
sustainable  
food production  
possible