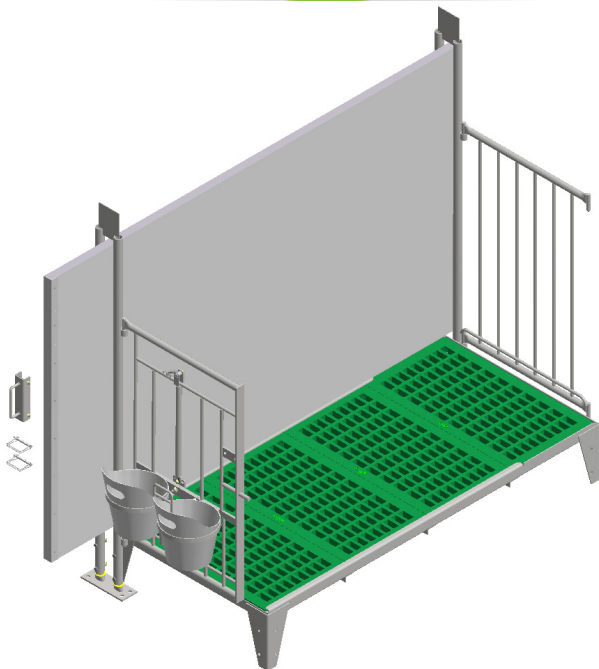




The Artex Raised Calf Zone Pen has all of the benefits of the Artex Calf Zone Pen and more. Ideal for warmer climates, the elevated slatted floor of the Raised Calf Zone pen offers enhanced ventilation and better air flow which helps to cool calves.

These Free Standing Pens feature slatted floors, removable back gates, and optional rubber mats recommended for newborn calves.

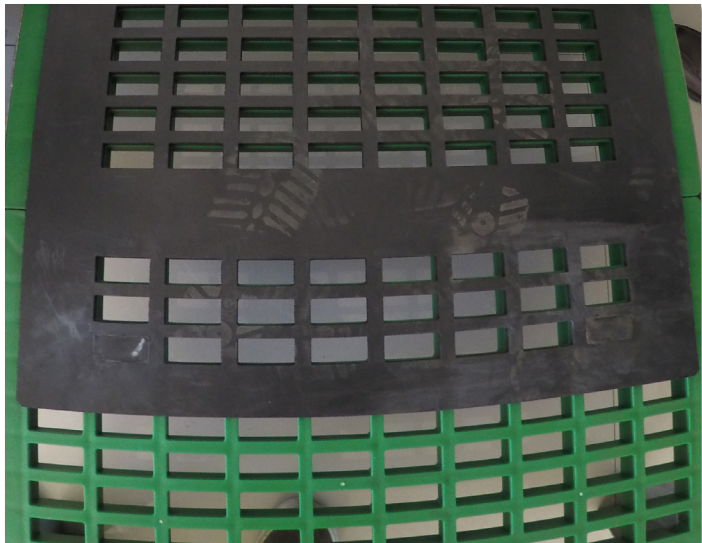
The Front Gate of the Calf Zone comes with two openings to reduce the amount of feed being dropped into the milk/water bucket or vice versa. Ask us about our many customizable options including the bottle holder and hay feeders.





A Fundamental Part of the Comfort Zone the Calf Zone System Features:

- Optional hay feeders
- Easy latch opening gates
- 5L (1.3 Gal) and 10L (2.6 Gal) bucket holders
- Optional 3L (0.7 Gal) and 6L (1.6 Gal) bottle feeders
- Removable walls for easier cleaning
- Raised floor for use with flush systems
- Improved ventilation for warmer climates
- Slatted frame for increased stability and trouble-free installation



Choose Your Calf Zone Pen Size:

1m (3.28') deep x 1.6m (5.25') wide x 1.6m (5.25') tall
2m (6.56') deep x 0.762m (2.5') wide x 1.2m (3.94') tall

NEW FEATURE - Comfort Cushion Starter Mat

This custom designed mat with in-line drain holes is easy to remove and disinfect. Providing your calves with the additional cushion they need to be comfortable and prevent injuries.

Speak with us for more information

