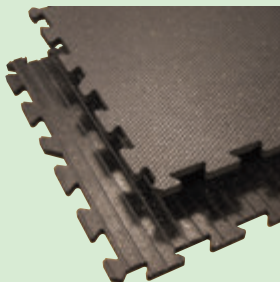


# DAIRY STALL MAT

## A Natural and Healthy Protection

- Reduce the need of conventional bedding; decrease the waste volume proportionally.
- Non-porous, antiskid honeycomb surface filters out urine and manure. It can be washed easily and dries quickly (indoor or outdoor usage).
- The density of the rubber provides orthopedic benefits to help prevent deterioration of the joints.
- Provides excellent protection against injuries caused by falls.
- Insulation against cold, damp concrete floors, a source of fatigue and rheumatism.
- Prevents damage to floors while it absorbs vibrations and noise.
- Resistant to acids in most products used to eliminate bacteria and other health risks.
- A highly durable product that creates a healthy environment.

**INTERLOCKING  
SYSTEM  
AVAILABLE  
ON REQUEST.**



## EASY TO INSTALL

On a concrete floor.

1. Lay down the mat on the concrete surface.
2. Drill holes every 8 to 10 inches (20 to 25cm) around the edge of the mat and set-up with appropriate anchors.
3. You can seal the mats together by using the proper sealer product.



## SPECIFICATIONS

<b>SIZE:</b>	48 in x 72 in (122 cm x 183 cm)
<b>THICKNESS:</b>	1/2 in, 3/4 in (13 mm • 19 mm)
<b>SURFACE:</b>	Non-skid design (Honeycomb)
<b>UNDERSIDE:</b>	1/4 in x 1/8 in grooves every 3/4 in (6,4 mm x 3,2 mm grooves every 19 mm)
<b>SIDES:</b>	Square cut

Technical details and consultation provided by:  
**Dr. Jean-François Grenier, D.V.M.**

Distributed by:



132,181<sup>th</sup> Street, Industrial Park  
Beauceville (Quebec) Canada G5X 2S8

Phone: (418) 774-3694 or (418) 774-5694  
Fax: (418) 774-2905  
Website: [www.royalmat.com](http://www.royalmat.com)  
E-mail: [royalmat@royalmat.com](mailto:royalmat@royalmat.com)

Warehouses located throughout North America.

# DAIRY STALL MAT



## THE IDEAL RUBBER MAT FOR:

- Free stall barns
- Tie stall barns
- Parlor area
- Milking area
- Stalls
- Alleys
- Veterinary Clinics

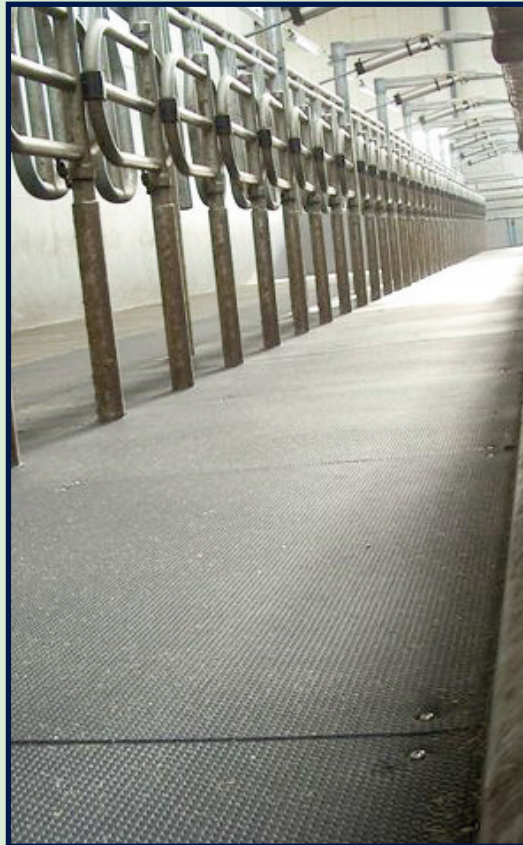
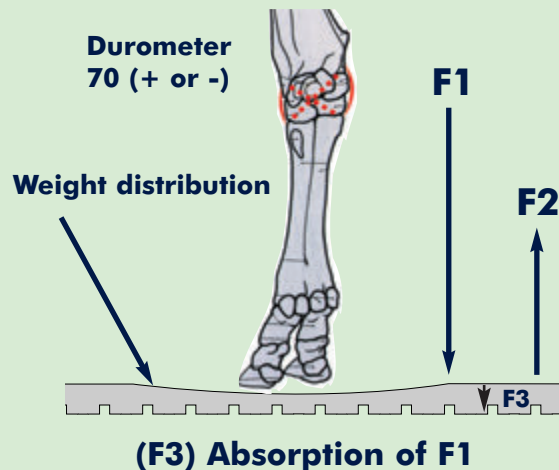


# DAIRY STALL MAT

## THE SOLUTION

The proper firmness and the grooved design of the DAIRY STALL MAT absorbs adequately the animal's weight.

### Forces applied on joints and soft tissues:



## THE RESULTS

- No side effects on the soft tissues
  - Ligaments
  - Tendons
- No premature wear to joints
- Improved circulation through the corium tissue.

## A TOO SOFT MAT

Will create imbalanced footing. Constant stress is applied to joints to compensate for the instability. The cow makes constant rocking movements.

### RESULTS

- Instability
- Soft tissues are affected, (tendons and ligaments)

### LONG TERM EFFECTS

Tendinitis and bursitis

## A TOO HARD MAT

Reflects the entire force applied by the weight of the animal on its joints. It will increase pressure on the hoof and limit blood circulation to the corium tissue.

Increased pressure on the hoof limits circulation to the corium tissue.

### Corium tissue



### RESULTS

- Greater pressure on the joints.
- Premature wear of the joints and cartilage.
- Arthritis and osteoarthritis.
- Decreased milk production.
- Difficulty to remain standing.
- Weight loss.